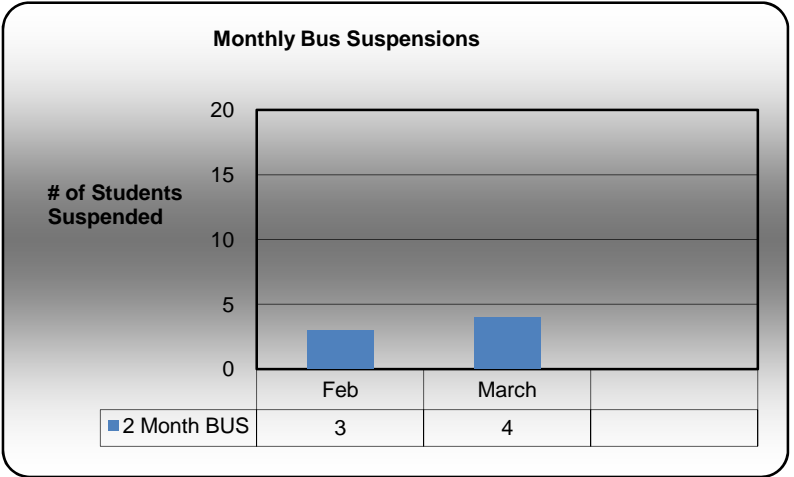


Hobart FOCUS

10-11 Dashboard
Term 3



This Version's Spotlight
Data

JOHN S. HOBART ELEMENTARY SCHOOL OBJECTIVES for 2009-2010

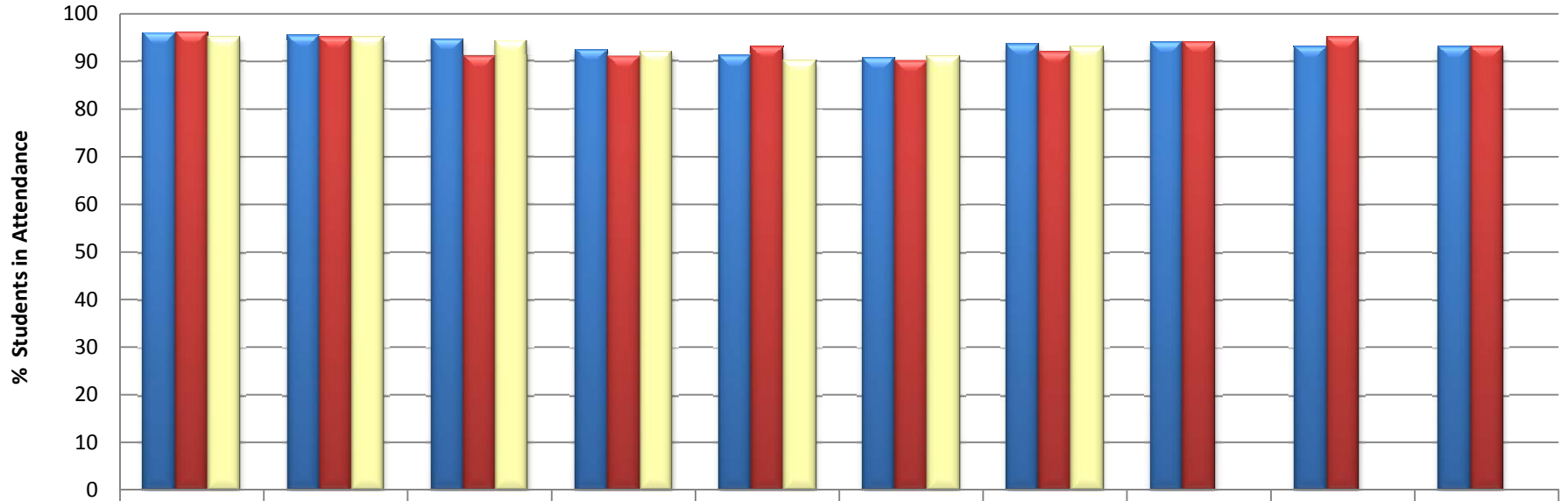
The following objectives will be implemented in an effort to meet our aforementioned goals:

- Increase the frequency of guided reading instruction in an effort to raise guided reading levels and advance students across the report card continuum.
- Increase the personal professional knowledge of reading, resource and speech teachers in the area of literacy instruction. This will be done through continued coaching and staff development. This will serve to increase the number of Title I AIS students and students with IEP's reading at or above grade level.
- Increase the amount of students receiving small group instruction from support service providers. This will serve to provide these students with highly individualized instruction.
- Strengthen students' independent reading selections through the development of reading lists with guided reading levels clearly identified.
- Provide professional development for teachers to increase their ability to match text to readers.
- Increase the reading rate in the primary grades as evidenced by running records completed on a regular basis by classroom teachers.
- Conduct professional development grade level meetings to increase knowledge of aligning center work with the students' current ability levels.
- Develop teacher knowledge by providing professional articles and research information on the teaching of English Language Arts and Mathematics.
- Conduct professional development grade level meetings that focus on aligning instruction between grade levels and between the classroom teachers and support service providers.
- Conduct regular 1:1 data meetings between teachers and administration where student progress and individual improvement plans are discussed for each student.
- Maintain an average daily attendance rate of 95% or higher throughout the course of the school year.
- Develop students' civic values and respect for the rights of others through a character education program that focuses on the ten core virtues of the William

John S. Hobart Elementary School
Year to Date
Monthly Average Daily Attendance



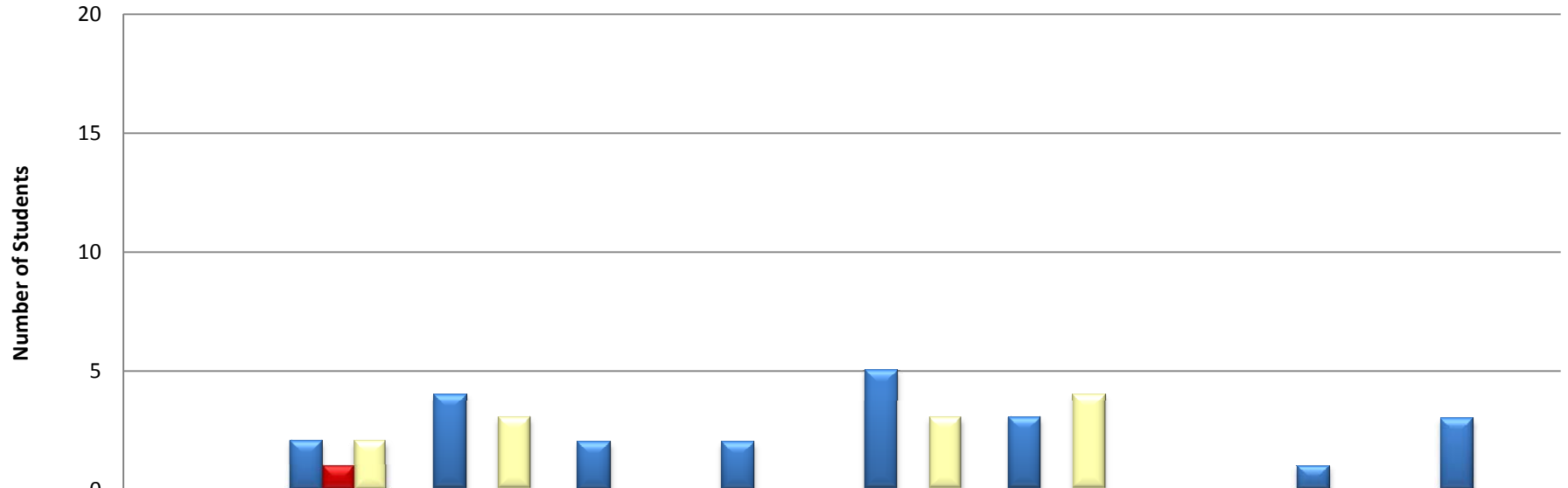
Average Daily Attendance by Month



	September	October	November	December	January	February	March	April	May	June
EndYear_2009	96	95	94	92	91	91	94	94	93	93
EndYear_2010	96	95	91	91	93	90	92	94	95	93
EndYear_2011	95	95	94	92	90	91	93			



Monthly Bus Suspensions

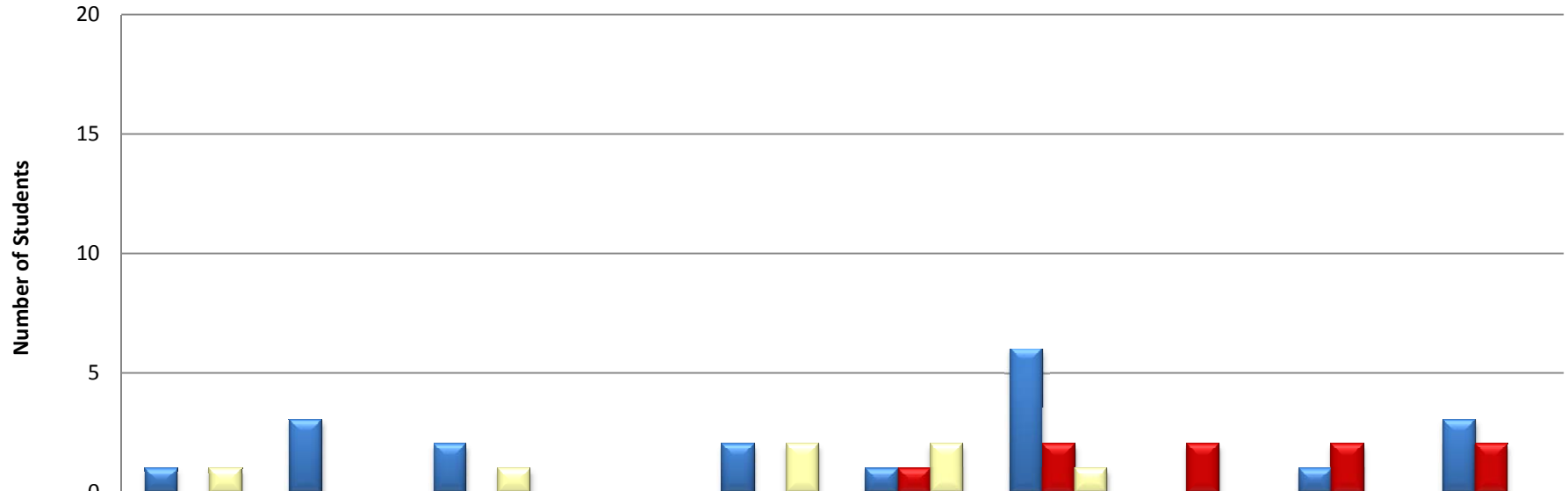


	September	October	November	December	January	February	March	April	May	June
EndYear_2009	0	2	4	2	2	5	3	0	1	3
EndYear_2010	0	1	0	0	0	0	0	0	0	0
EndYear_2011	0	2	3	0	0	3	4			

John S. Hobart Elementary
Year to Date
Monthly Out of School Suspensions



Monthly Out of School Suspensions



	September	October	November	December	January	February	March	April	May	June
■ EndYear_2009	1	3	2	0	2	1	6	0	1	3
■ EndYear_2010	0	0	0	0	0	1	2	2	2	2
■ EndYear_2011	1	0	1	0	2	2	1			